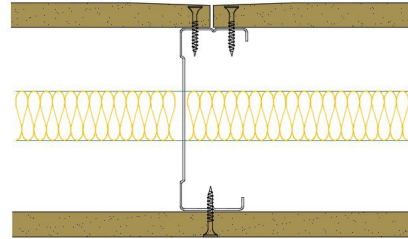


## 92-K-51(25) - SPEEDLINE System Data Sheet - Version V1 (24-10-23)

SPEEDLINE 92mm 'C' Stud Partition @600mm Ctrs,  
with Knauf 12.5mm Wallboard each side, 25mm  
APR



### System Performance Breakdown

Fire Resistance:

BS476 Part 22:1987:

Test Ref & Date or Applied Ref & Report:

Max Height:

Thickness:

Duty Grade: BS 5234: Part 2:1992:

Sound Insulation:

**30/30 Minutes** (Integrity/Insulation).

**BTC 17436F - BRE Report P102396-1011B**

**Refer to Speedline Specification Clause**

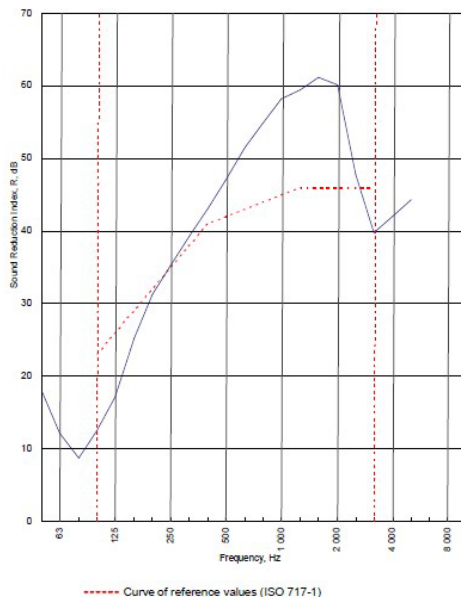
**119 mm.** (At Base Track, Excluding Finishes)

**Medium - Annexes A-F**

**42  $R_w$ dB**, Date Tested or Assessed Against - 70-K-51(25)


Test Code:  
**H17514AA**  
Test Date:  
08/08/2011


Freq. Hz	R dB
50	18.1
63	12.1
80	8.7
100	12.5
125	17.1
160	25.2
200	31.3
250	35.2
315	39.3
400	43.1
500	47.1
630	51.5
800	54.9
1000	58.2
1250	59.5
1600	61.2
2000	60.1
2500	47.7
3150	39.8
4000	42.0
5000	44.3
6300	
8000	
10000	





Rating according to BS EN ISO 717-1:1997	<b><math>R_w</math> (C;Ctr) = 42 (-4;-11) dB</b>		
Evaluation based on laboratory measurement results obtained by an engineering method:	$C_{50-150}$ = -6 dB	$C_{50-500}$ = -5 dB	$C_{100-500}$ = -4 dB
	$C_{50-150}$ = -16 dB	$C_{50-500}$ = -16 dB	$C_{100-500}$ = -11 dB

TESTED AT ONE OF THE UKAS ACCREDITED LABORATORIES BELOW

B.T.C (H-Ref on Graph) 

B.R.E 

AIRO 

S.R.L 

Customer: Metsec plc Hespsec Division

BTC 17514A: Page 9 of 11



SPEEDLINE Drywall Systems, Adsetts House, 16 Europa View, Sheffield Business Park, Sheffield, S9 1XH.

Tel: 0114 231 8030.

Email: [enquiries@speedlinedrywall.co.uk](mailto:enquiries@speedlinedrywall.co.uk)

(As per the requirements set out in ISO/IEC 17025:2017 regarding test data the results stated have been carried out by voestalpine Metsec plc as part of the contract to supply Speedline Metal Sections to SIG Plc)